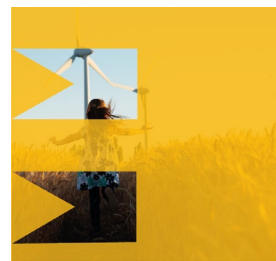


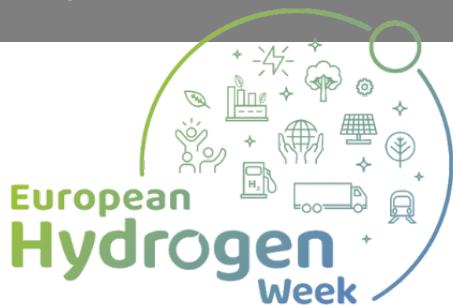
# Greenet



The network of Horizon Europe  
Cluster 5 National Contact Point.



## Development of a Zero-Gap Anion Exchange Membrane System for Green Hydrogen Production in Brazing Furnaces



European Hydrogen Week 2024  
GREENET Pitch session  
TechForum, 19th November 2024

Ipek Terzioglu Dokmeci  
Epta Turkiye

[www.eptaglobal.com](http://www.eptaglobal.com)

[www.linkedin.com/company/eptaa](https://www.linkedin.com/company/eptaa)



The GREENET project has received funding from the EU Horizon Europe programme under Grant Agreement No 101069604



**EPTA**

# ABOUT EPTA



Founded in 1984, Epta provides advanced manufacturing solutions for the **white goods, automotive, and HVAC industries**. Specializing in **continuous furnace brazing, cable production, and tube/metal forming**, Epta delivers high-quality, efficient, and customized components.

With a strong focus on R&D, sustainability, and meeting global standards, Epta supports OEMs in competitive markets. To learn more about Epta's innovative approaches and industry-specific solutions, visit our website.

ESKIŞEHİR  
1984

WE ARE THE  
**SUSTAINABLE  
FUTURE**

**EPTA**

Effective, Environmental and Sustainable Manufacturing

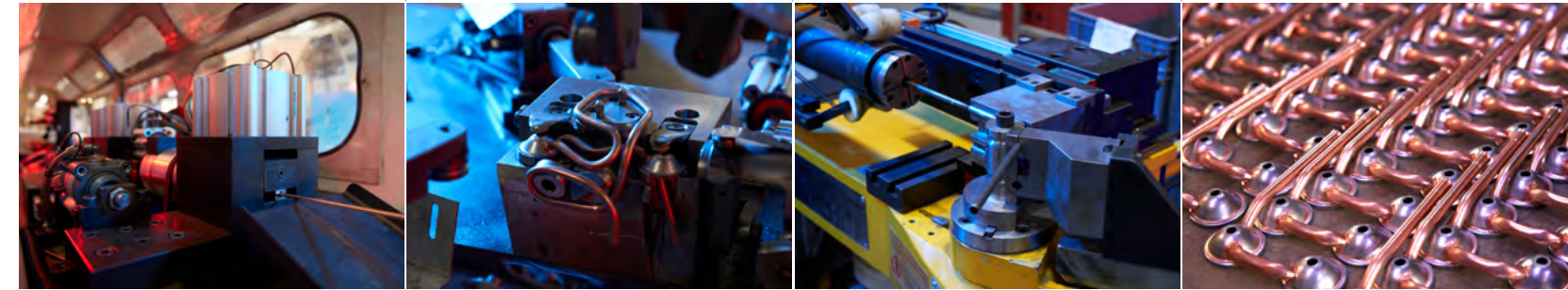
[www.eptaglobal.com](http://www.eptaglobal.com)

# TUBE & PIPE FORMING

2 mm to 32 mm

copper  
carbon steel  
stainless steel

WE PRODUCE  
RIGHT TUBE  
FOR EVERY KIND  
OF INDUSTRY  
WE HAVE **APPROPRIATE  
SOLUTION**



## ■ PIPE BENDING & END FORMING

Epta specializes in complex tube, pipe, and profile bending across materials such as steel, stainless steel, carbon steel, copper, and brass, serving leading clients in the white goods, automotive, HVAC, and engineering industries.

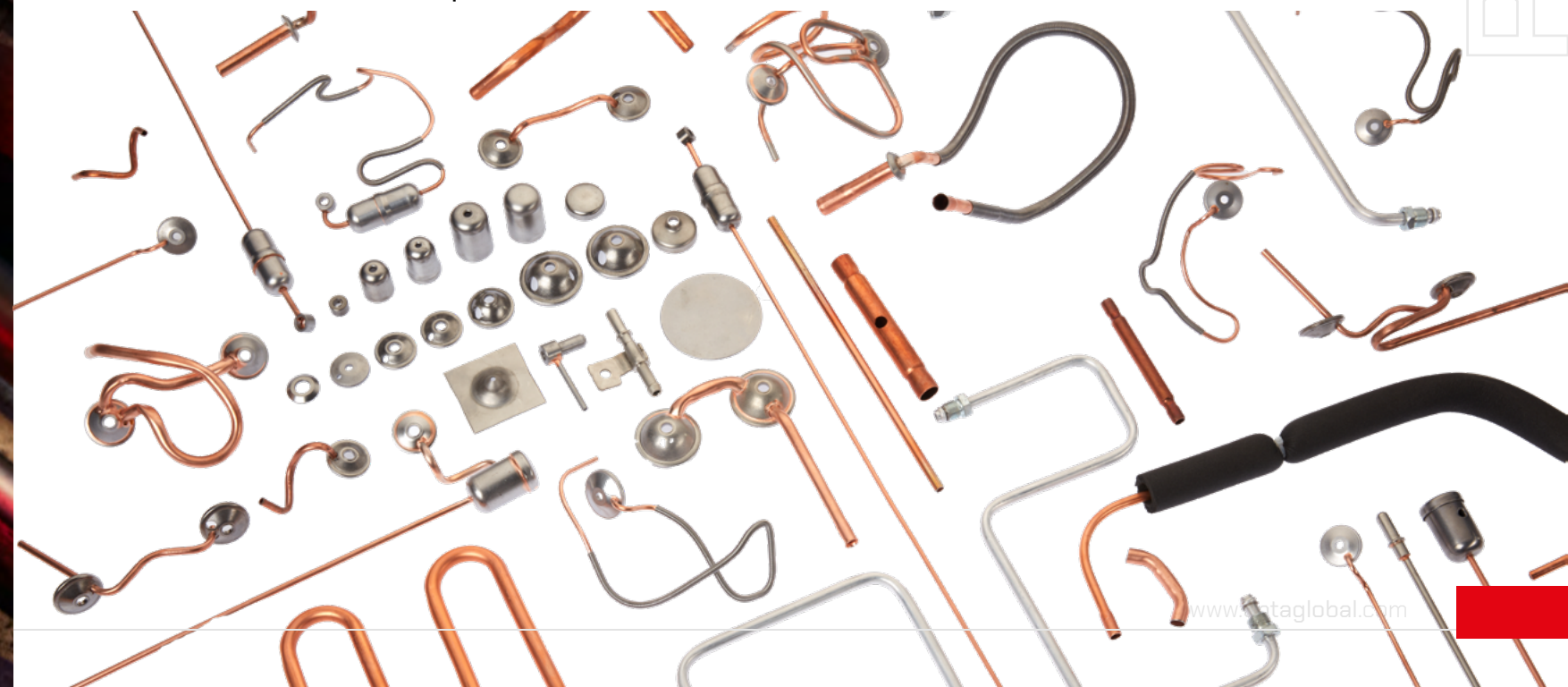
## ■ THICK AND THIN TUBES BENDING

We bend welded and seamless pipes and profiles in materials such as carbon steel, stainless steel and copper. Our bending machines handle round, square, and elliptical pipes, both coated and untreated, in sizes from 2-32 mm, with or without mandrels, and with fixed or variable radius.

## ■ AUTOMATED PRODUCTION MACHINES

In our production, automated machines handle tube bending, section bending, end forming, and hole-making for tubes sized 2-32 mm, with leakage detection ensuring precision.

Thanks to Epta's strong R&D infrastructure, our automated production machines are designed and built in-house by Epta's R&D team, tailored to meet customer requirements.



# COOLING GROUP



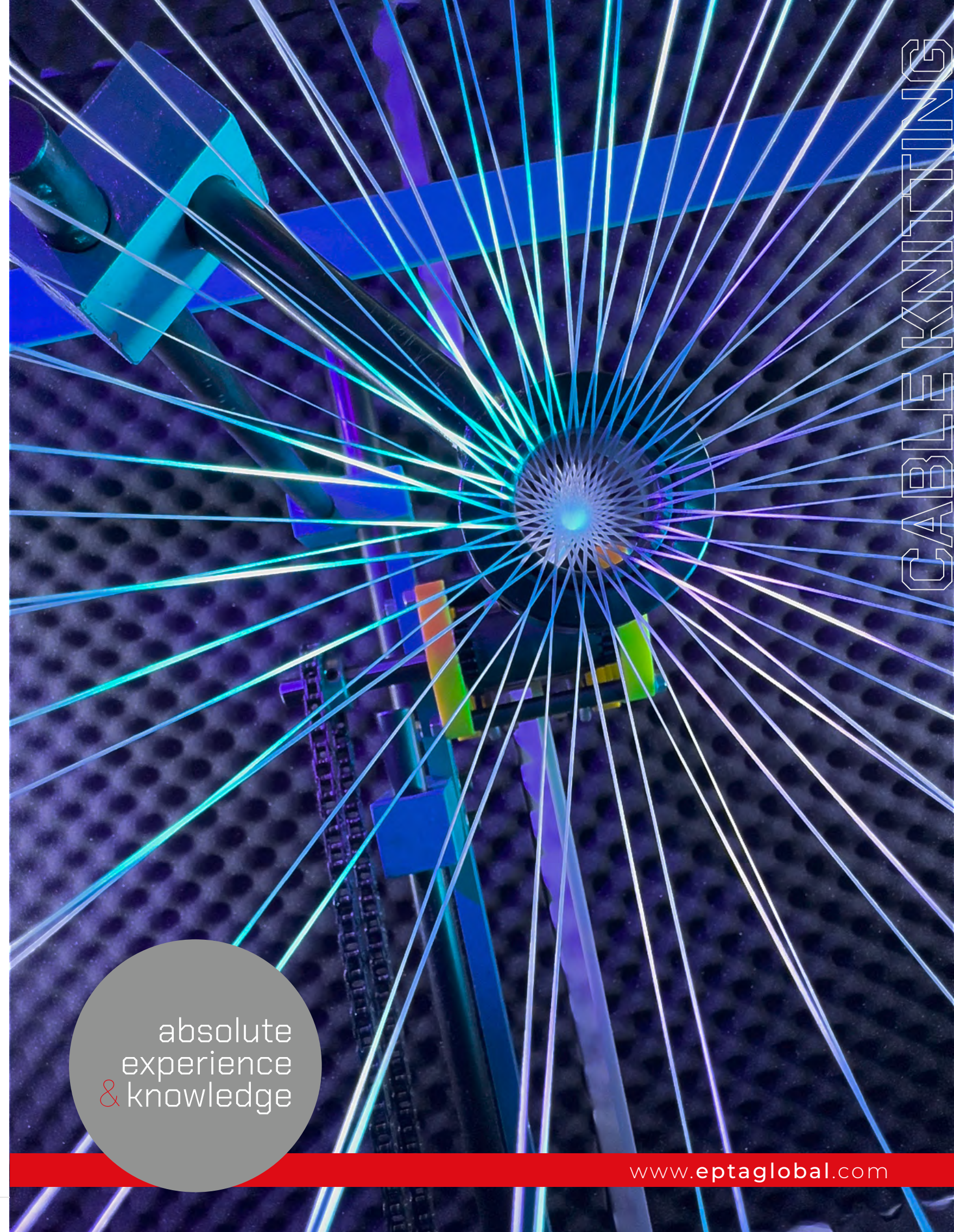
# EPTA



## LEAD CABLES FOR COMPRESSOR MOTORS



Effective, Environmental and Sustainable Manufacturing



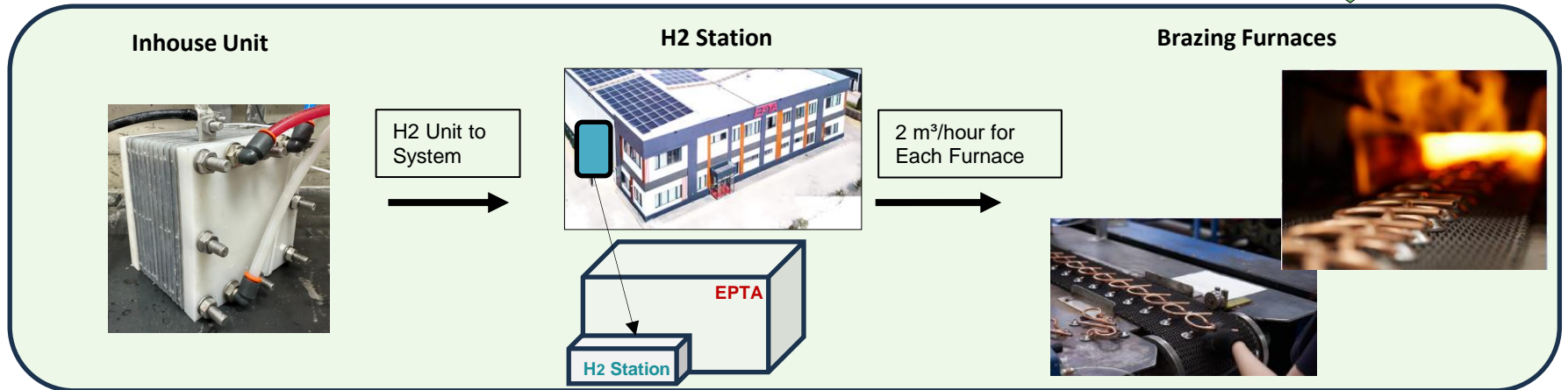
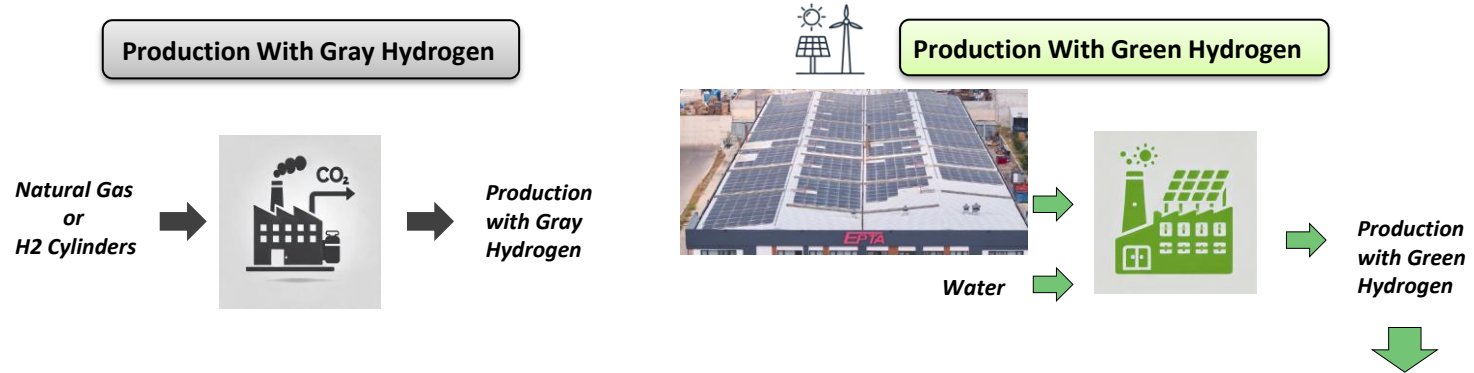
CABLE KNOTTING

absolute  
experience  
& knowledge

[www.eptaglobal.com](http://www.eptaglobal.com)

The project is within the Electrolysis content of the Strategic Research and Innovation Agenda.

## EPTA BRAZING FURNACES H2 USAGE

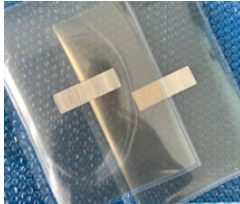


*The project is within the Electrolysis content of the Strategic Research and Innovation Agenda.*

## EPTA IN-HOUSE H2 PRODUCTION SYSTEM

### H2 CELL PROTOTYPE

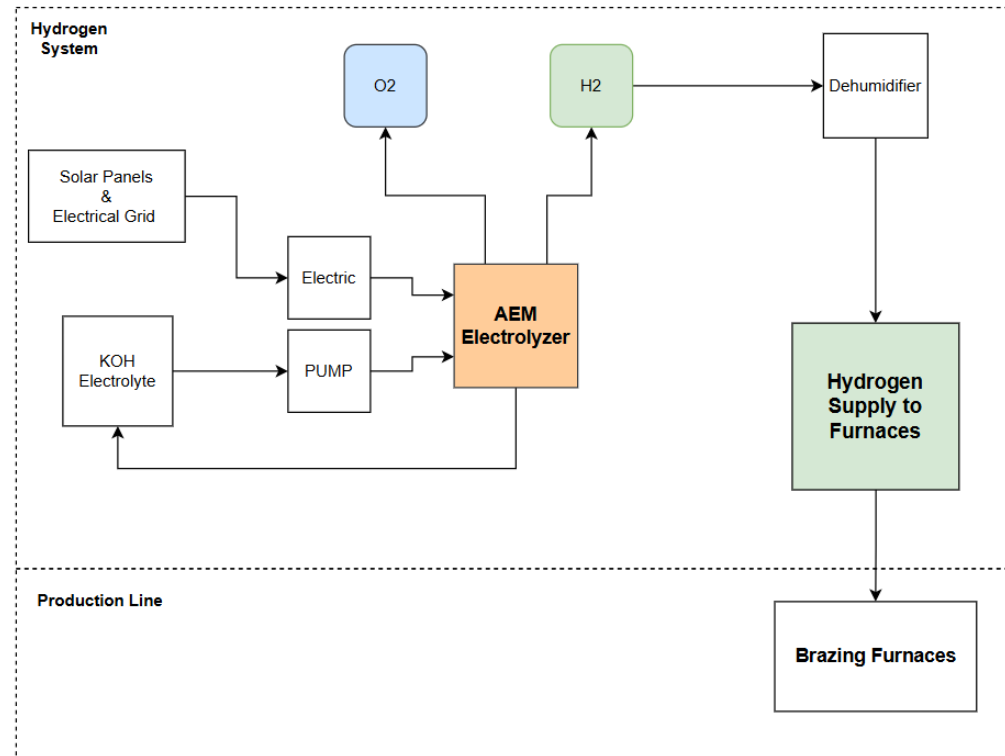
#### Anion Exchange Membrane (AEM)



#### AEM Electrolyzer Unit and System



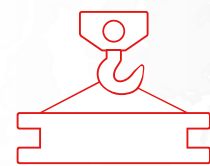
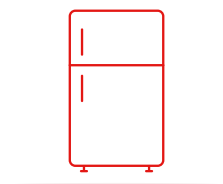
### SYSTEM DIAGRAM





WE ARE THE SUSTAINABLE FUTURE

Discover our advanced solutions for  
the **White Goods,**  
**Automotive and**  
**HVAC sectors**

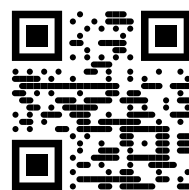


**Contact**  
**[www.eptaglobal.com](http://www.eptaglobal.com)**  
**[info@epta.com.tr](mailto:info@epta.com.tr)**

<https://www.youtube.com/@epta5563> 

<https://www.linkedin.com/company/eptaa> 

**TUBE BENDING  
& END FORMING  
BRAZING  
CABLE PRODUCING**



absolute  
experience  
& knowledge

